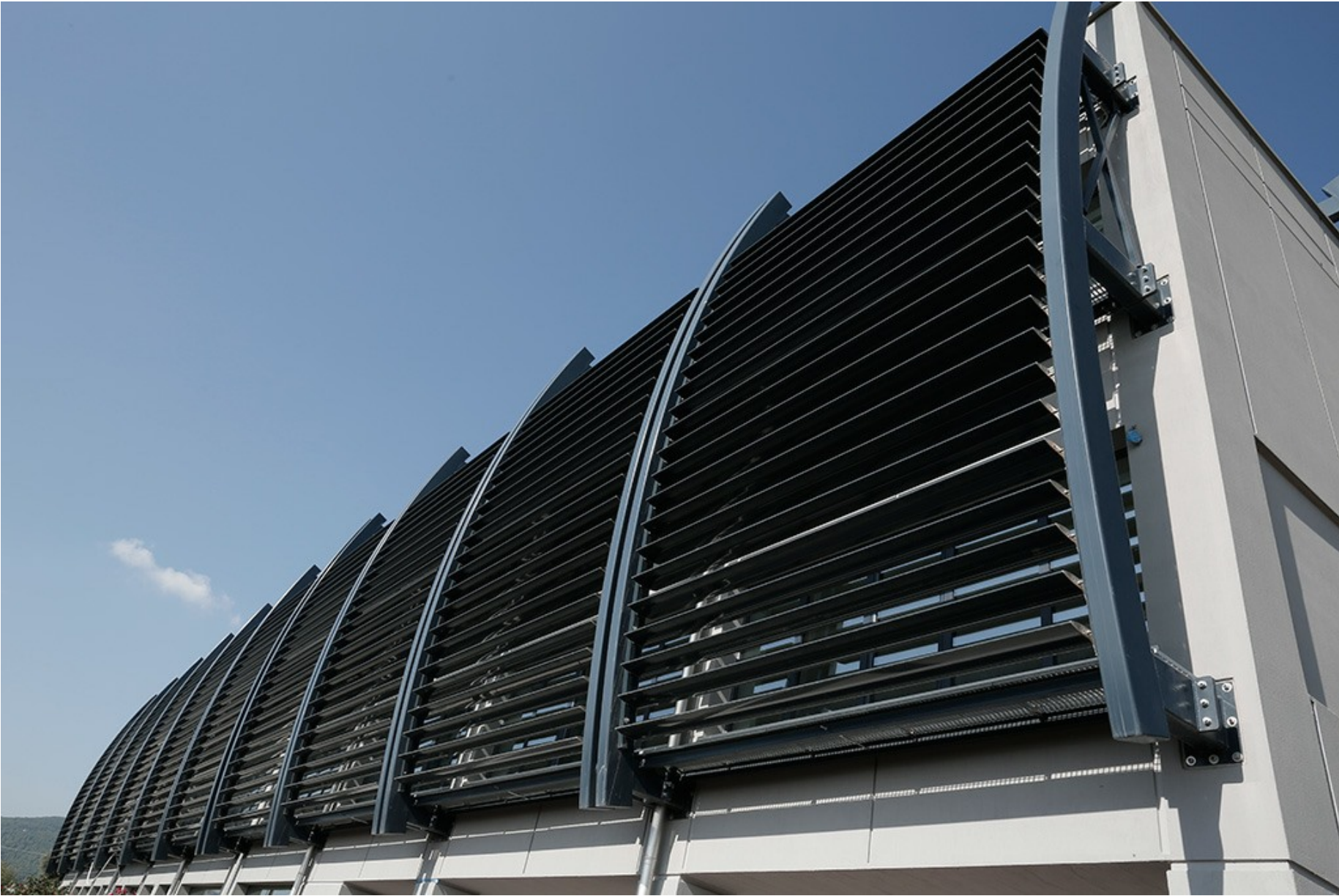




**VOUTSADAKIS**  
STRUCTURAL STEEL  
CONSTRUCTIONS  
1969



EXTERNAL STEELWORK

# BUILDING FACADE - YACHTING PROTECTION LTD

Renovation of the facades of a building in Kapandriti, Attica.

The project involved the construction and installation of exterior reinforced concrete shading frames on three sides of an existing building. Behind the outer shading frames three level metal access passageways lined with electrically pressed grates have been built.

CLIENT	YACHTING PROTECTION LTD
LOCATION	KAPANDRITI, ATTICA
YEAR OF CONSTRUCTION	2013
DIMENSIONS	800 sqm